



PORT OF LONDON  
AUTHORITY

Port of London Authority  
Chart Correction Advice  
Date: 24th July 2017

**CCA No: 2017/16**



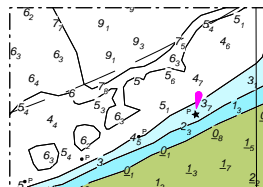
Chart: Woolwich Reach (Lower)

PLA Chart No. 324  
HO Ref No. 113-324-085  
Previous Chart Correction: 2017/13

The accompanying block correction shows

Four screw moorings (115) and (116) have been pulled and permanently removed from the riverbed.

The associated ground tackle & mooring buoys have been removed and the East Woolwich Lower Tier is discontinued



For further information see the PLA hydrographic service website:

<http://www.pla.co.uk/Safety/PLA-Hydrographic-Service-Published-Surveys>