



PORT OF LONDON  
AUTHORITY

Port of London Authority  
Chart Correction Advice  
Date: 30th June 2016

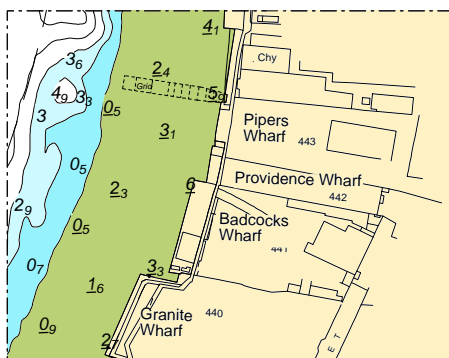


**CCA No: 2016/18**

Chart: Blackwall Reach

PLA Chart No. 321  
HO Ref No. 113-321-190  
Previous Chart Correction: 2016/16

The accompanying block correction shows that the barge and screw moorings numbered (61), (62), (63), (64), and (65) located upriver from Pipers Wharf have been pulled and removed from the river.



For further information see the PLA hydrographic service website:

<http://www.pla.co.uk/Safety/PLA-Hydrographic-Service-Published-Surveys>