



PORT OF LONDON  
AUTHORITY

Port of London Authority  
Chart Correction Advice  
Date:18th August 2015



**CCA No: 2015/16**

Chart: Gravesend Reach

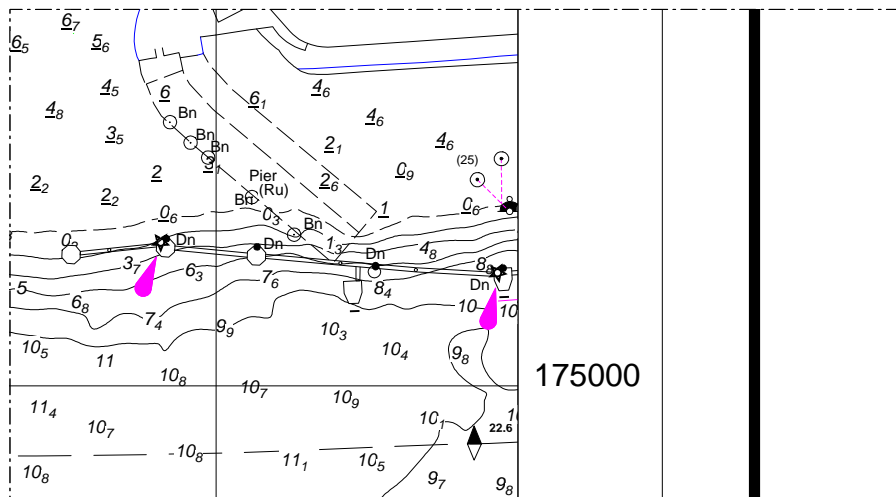
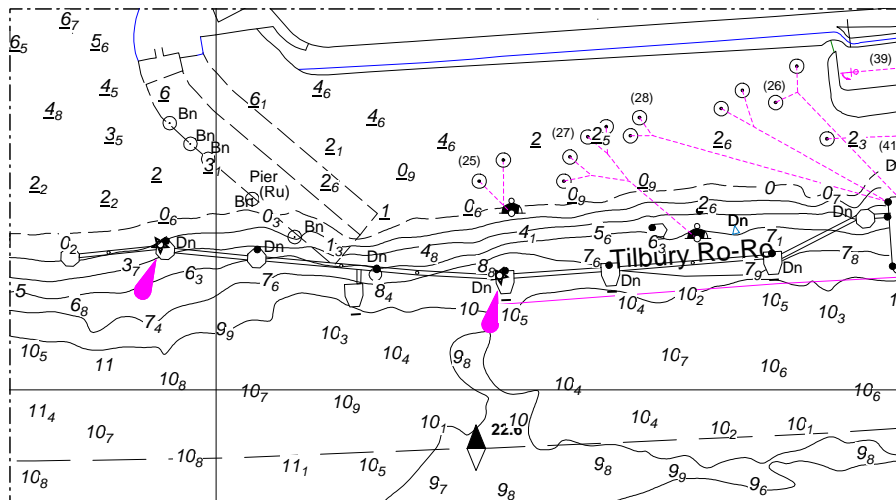
PLA Chart No. 335/336

HO Ref No. 113-336-255

HO Ref No. 113-336-609

Previous Chart Correction: MS335 2014/16; MS336 2014/19

The accompanying block corrections show a new extension to the Ro-Ro berth at the Port of Tilbury.



For further information see the PLA hydrographic service website:

<http://www.pla.co.uk/Safety/PLA-Hydrographic-Service-Published-Surveys>