



PORT OF LONDON
AUTHORITY

Port of London Authority
Chart Correction Advice
Date: 5th Sept 2014



CCA No: 2014/24

Chart: Woolwich Reach

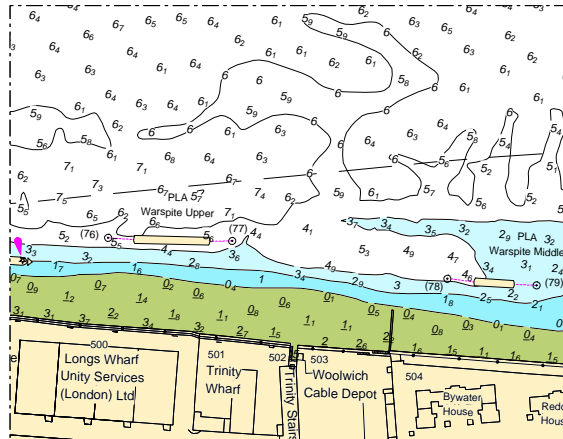
PLA Chart No. 323/324
HO Ref No. 113-323-202
HO Ref No. 113-324-085

Previous Chart Correction: 323MS 1; 324MS 2014/6

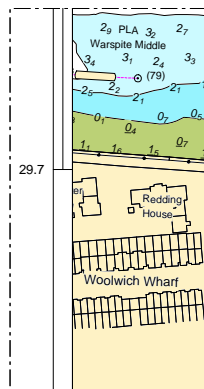
The accompanying block corrections show that two screw moorings with a 50m pontoon in between have been placed down river from Barrier Gardens pier. The new moorings are numbered (76) & (77) and called 'PLA Warspite Upper'. Moorings (78) & (79) have been renamed to 'PLA Warspite Middle'. New screw positions:

No. (76) - Lat 51 29.75N / Long 0 2.58E

No. (77) - Lat 51 29.75N / Long 0 2.651E



323MS



324MS

For further information see the PLA hydrographic service website: www.pla.co.uk/hydrohomepage