



PORT OF LONDON
AUTHORITY

Port of London Authority
Chart Correction Advice
Date: 09 Sept 2013

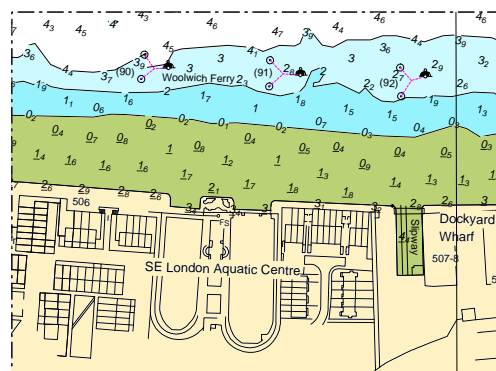


CCA No: 2013/61

Chart: Woolwich Reach

PLA Chart No. 324
HO Ref No. 113-324-085

The accompanying block correction shows that the Woolwich Ferry lay-by mooring No.90 has been recovered from the riverbed and reinstated with an unlit Admiralty class 3 buoy attached.



0 3.5'E

For further information see the PLA hydrographic service website: www.pla.co.uk/hydrohomepage