

NOTICE TO MARINERS No.L1 of 2012

SEA REACH

LONDON GATEWAY WORKS & DREDGING OPERATIONS OF SEA REACH & ESTUARY

Notice to Mariners L19 of 2011 is hereby cancelled.

Commencement of Phase 2 of the London Gateway Project

On or about 20th January 2012 Phase 2 reclamation work will commence at London Gateway (see chartlet overleaf).

Dredging will take place initially in the Sea Reach channel and in front of London Gateway site by dredger **MARIEKE** and will be joined by a second dredger, as yet unnamed. Dredged material will be used for the reclamation to the west of current construction area.

Dredging of deep water route to the Sunk east of SR1 is planned to start in the second quarter of this year.

Commencing in the month of January 2012 and continuing for the remainder of 2012, intermittent 3 / 4 day campaigns of gravel dredging of Sea Reach 7 area will be undertaken by either the dredger **CHARLEMAGNE** or the **VICTOR HORTA** for ALPHA jetty.

Dredgers will display lights & shapes in accordance with International Regulations for Preventing Collisions at Sea 1972 (as amended) rule 27 b.

London Gateway Phase 1

Work is currently underway on removal of front bund rock armour & revetment in preparation for fitting out of quay walls on berths 1 to 3.

All vessels are to proceed with caution passing the London Gateway works and dredgers working in the Sea Reach at reduced speed.

Further information can be obtained from London VTS either by telephone 01474 560311 or Channel 68.

10 January 2012

Port of London Authority
London River House
Royal Pier Road
Gravesend, Kent DA12 2BG

**DAVID PHILLIPS
CHIEF HARBOUR MASTER**

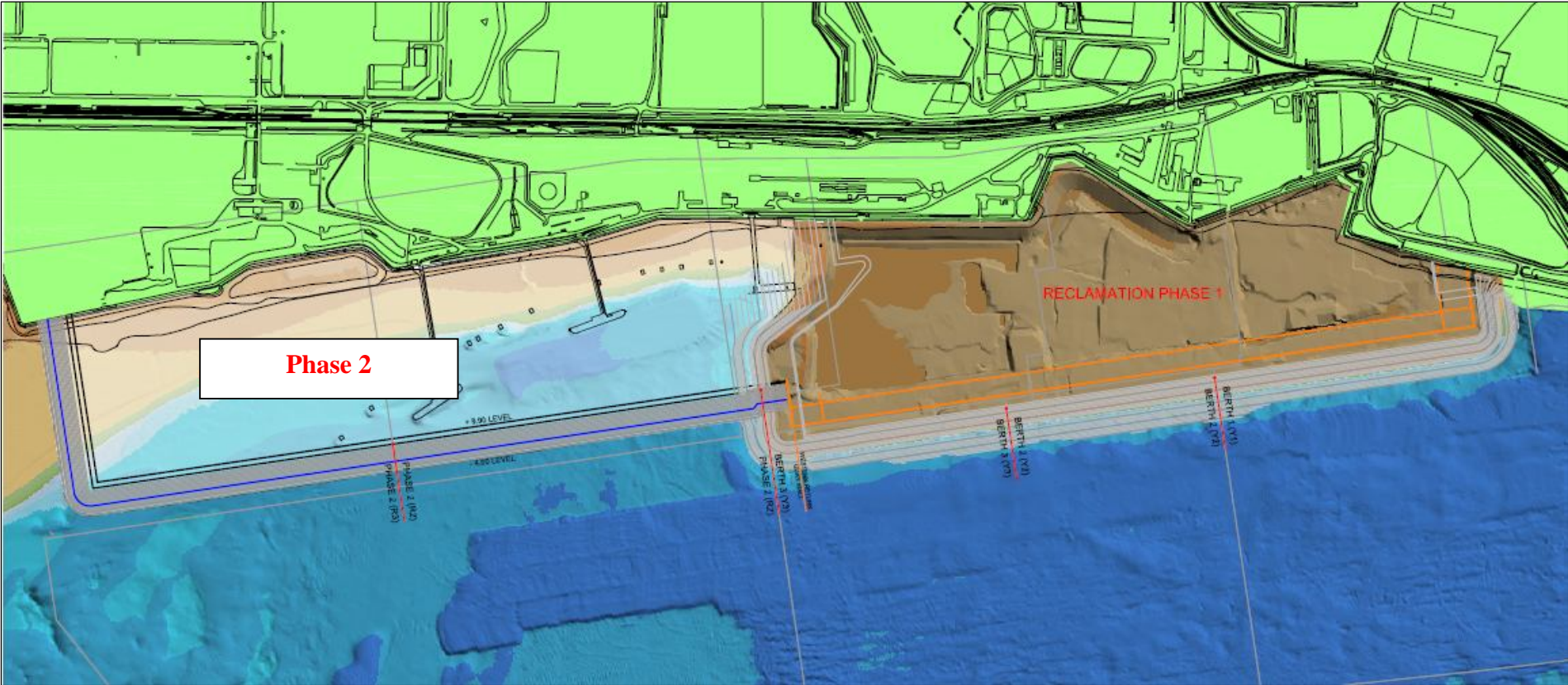


EXPIRY DATE: TBC
TO RECEIVE FUTURE NOTICES TO MARINERS BY E-MAIL,
PLEASE REGISTER VIA OUR WEBSITE www.pla.co.uk

Telephone calls, VHF radio traffic, CCTV and radar traffic images may be recorded in the VTS Centres at Gravesend and Woolwich.



L1 of 2012 Chartlet



London Gateway Phase 2 reclamation