

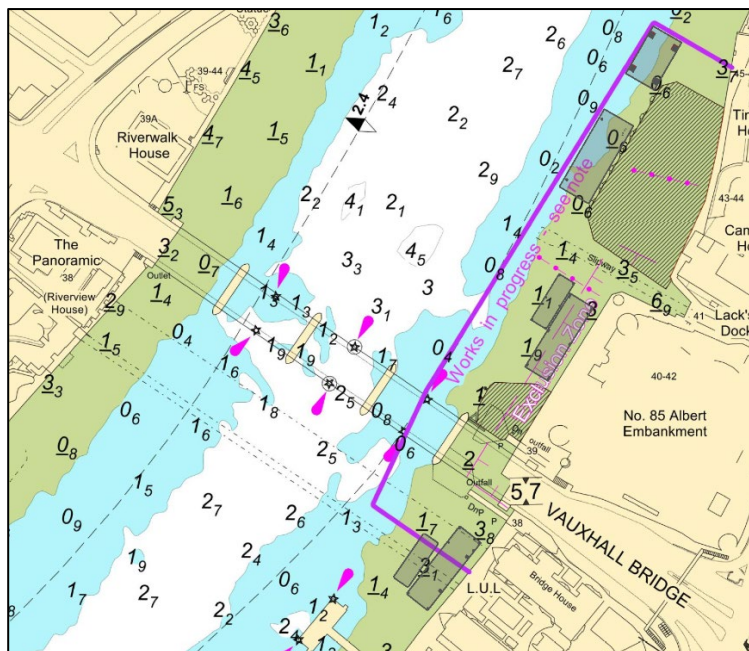
## NINE ELMS REACH

# ALBERT EMBANKMENT COFFERDAM

*This notice supersedes M76-23 which is hereby cancelled.*

Mariners are advised that contractors working on the Tideway Tunnel Project will continue works to deconstruct the cofferdams at Albert Embankment to either side of Vauxhall Bridge, which may involve arch closures. This new phase of works is expected to take approximately 9 months.

Please see the chartlet below showing the location of the works and the approximate barge and plant placements in the river.



No vessels other than those engaged in the works or those who have permitted vessel status shall enter the works area shown in purple.

At times during this phase of works Vauxhall Bridge no 4 arch will be closed to all vessels.

The works, which will include piling extraction, excavation, scour protection laying and reinforced concrete deconstruction works will use a variety of crane barges, a JUB, supply barges, tugs and multi-cat vessels.

**13/10/2023**

Port of London Authority  
London River House, Royal Pier Road,  
Gravesend, Kent DA12 2BG

**LYN KINDLEN-FUNNELL**  
**Harbour Master**

**EXPIRY DATE: 30/06/2024**

TO RECEIVE FUTURE NOTICES TO MARINERS BY E-MAIL,  
PLEASE REGISTER VIA OUR WEBSITE [pla.co.uk/Subscription-to-Newsletter](http://pla.co.uk/Subscription-to-Newsletter)

Telephone calls, VHF radio traffic, CCTV and radar traffic images may be recorded in the  
VTS Centres at Gravesend and Woolwich



View all Active Notice to Mariners  
using the above QR Code

A smart signal light fitted above no 4 arch and controlled remotely by London VTS will show signals with meanings as below.



Closed to navigation to all vessels



Open to navigation to all vessels



Only "PERMITTED VESSELS" may transit through No 4 arch.

It remains the responsibility of the "PERMITTED VESSEL'S" master to ensure that they can safely manoeuvre through No 4 arch and around the marine plant involved in the worksite with due regard to the height and the direction of tide.

At times RY flags may be exhibited at the site. Requirements to proceed with caution or at slow speed will be made in accordance with the procedure set out in the Port of London Authority's [Port Information Guide](#), under 'London VTS', 'Section 4'.



**'Romeo Yankee'**

Vessels are requested to be mindful of the nature of the works, be aware of vessels proceeding to and from the works, their wash when passing the works, and to pass at a safe distance.

Further details will be broadcast by **London VTS** on **VHF Channel 14**.