

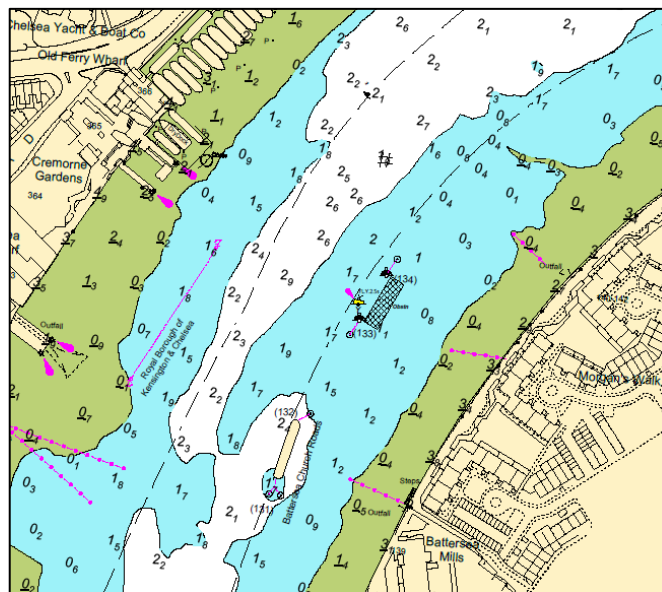
NOTICE TO MARINERS M29 of 2018

BATTERSEA REACH BATTERSEA DRIFTWOOD MOORING SUNKEN BARGE

Mariners are advised that following the sinking of a barge on the inside of the Battersea Driftwood mooring, a Special Mark has been positioned off the mooring to mark the location of the vessel. The Special Mark is displaying a yellow light with characteristics Fl.Y.2.5s.

Mariners are instructed there is currently no inshore passage of the PLA Driftwood Mooring with the exception of those vessels supporting salvage operations until the barge is recovered.

Please see the chartlet below depicting the location of the sunken vessel and Special Mark.



Further details will be broadcast by London VTS on VHF Channel 14.

4 April 2018

Port of London Authority
London River House, Royal Pier Road,
Gravesend, Kent DA12 2BG

BOB BAKER
CHIEF HARBOUR MASTER



TO RECEIVE FUTURE NOTICES TO MARINERS BY **E-MAIL**,
PLEASE REGISTER VIA OUR WEBSITE www.pla.co.uk
Telephone calls, VHF radio traffic, CCTV and radar traffic images may
be recorded in the VTS Centres at Gravesend and Woolwich

