

**PORT OF LONDON**  
AUTHORITY

NOTICE TO MARINERS  
**LAMBETH REACH**

**M26-24****DIVING OPERATIONS**

Mariners are advised that diving operations are expected to take place daily between the 19<sup>th</sup> and 22<sup>nd</sup> March 2024 on the Shell Centre intake and discharge sumps, located, respectively, beneath and immediately downriver of Waterloo Millennium Pier.

Diving operations will be conducted from vessel 'Chili Dog' and will be timed around low water periods – works include but not limited to lifting operations and localised dredging.

Requests for vessels to proceed with caution or pass at slow speed will be made by London VTS on VHF ch.14, in accordance with the PLA Port Information Guide, under "London VTS", section 4. Any further details will be broadcast by London VTS.

Vessel 'Chili Dog' should display International Code Flags 'Romeo Yankee (RY)' and 'Alpha (A)' as appropriate:

RY:



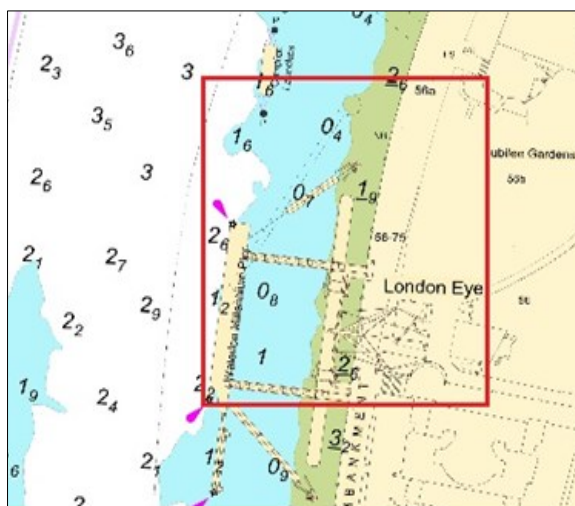
A:



Diver's point of entry to water:



The chartlet below shows the location of the operations:



Any further details will be broadcast by **London VTS** on VHF Ch 14

**04/03/2024**

Port of London Authority  
London River House, Royal Pier Road,  
Gravesend, Kent DA12 2BG

**MICHAEL SPICE**  
Assistant Harbour Master

**EXPIRY DATE: 24/03/2024**

TO RECEIVE FUTURE NOTICES TO MARINERS BY **E-MAIL**,  
PLEASE REGISTER VIA OUR WEBSITE [pla.co.uk/Subscription-to-Newsletter](http://pla.co.uk/Subscription-to-Newsletter)

Telephone calls, VHF radio traffic, CCTV and radar traffic images may be recorded in the  
VTS Centres at Gravesend and Woolwich



View all Active Notice to Mariners  
using the above QR Code