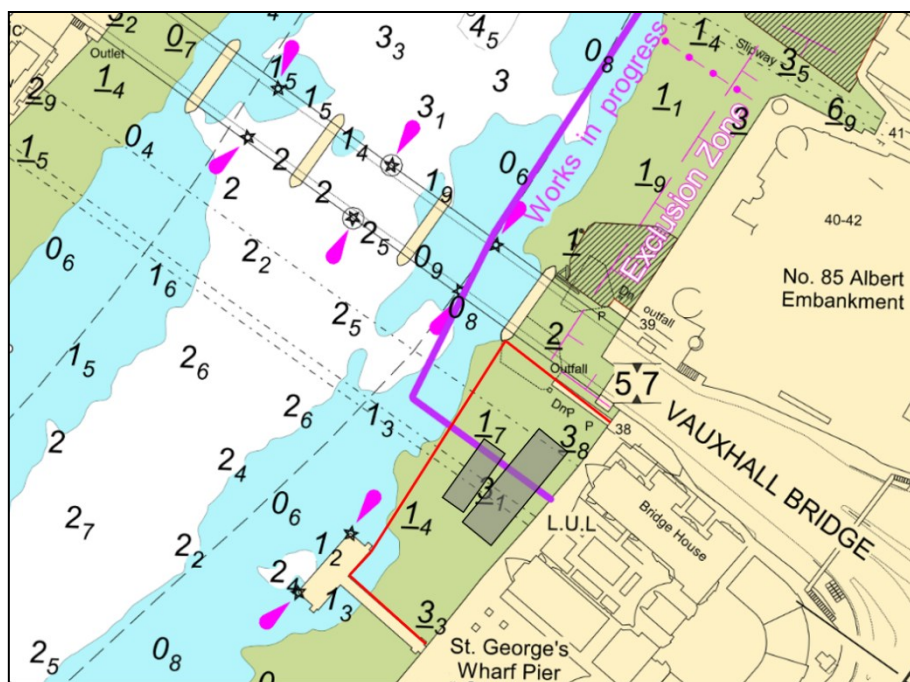


NINE ELMS REACH

ST GEORGES WHARF EXCLUSION ZONE

This notice supersedes M34-23 which is hereby cancelled.

Contractors working on the Tideway Tunnel Project will continue operations upriver of No. 5 arch of Vauxhall Bridge, which remains closed. Please see the chartlet below depicting the location of the upriver construction works between St Georges Wharf Pier and Vauxhall Bridge.



No vessels, other than those engaged in the works, shall enter the navigation exclusion zone depicted by the red lines. A closed arch sign will also be exhibited on the upstream brow of St Georges Wharf Pier.

At times RY flags will be exhibited in conjunction with requirements to proceed with caution or at slow speed in accordance with the procedure set out in the Port of London Authority's Port Information Guide, under 'London VTS', 'Section 4'.

**31/10/2023**

Port of London Authority
London River House, Royal Pier Road,
Gravesend, Kent DA12 2BG

LYN KINDLEN-FUNNELL
Harbour Master

EXPIRY DATE: 30/04/2024

TO RECEIVE FUTURE NOTICES TO MARINERS BY E-MAIL,
PLEASE REGISTER VIA OUR WEBSITE pla.co.uk/Subscription-to-Newsletter

Telephone calls, VHF radio traffic, CCTV and radar traffic images may be recorded in the
VTS Centres at Gravesend and Woolwich

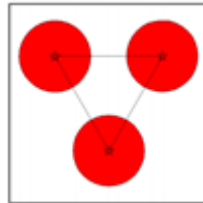


View all Active Notice to Mariners
using the above QR Code

Vessels are requested to be mindful of the nature of the works, be aware of vessels proceeding to and from the works and their wash when passing the works.

Arches closed to navigation will normally be marked in accordance with the Port of London Authority Thames Byelaws 2012 namely:

- By day, three red discs 0.6 metres in diameter at the points of an equilateral triangle with the apex downwards and the base horizontal
- By night, three red lights in similar positions to the discs displayed by day.



The special signal light described in [M62 of 2022](#) at No. 4 arch of Vauxhall Bridge will remain in use.

Further details will be broadcast by London VTS on VHF Channel 14.