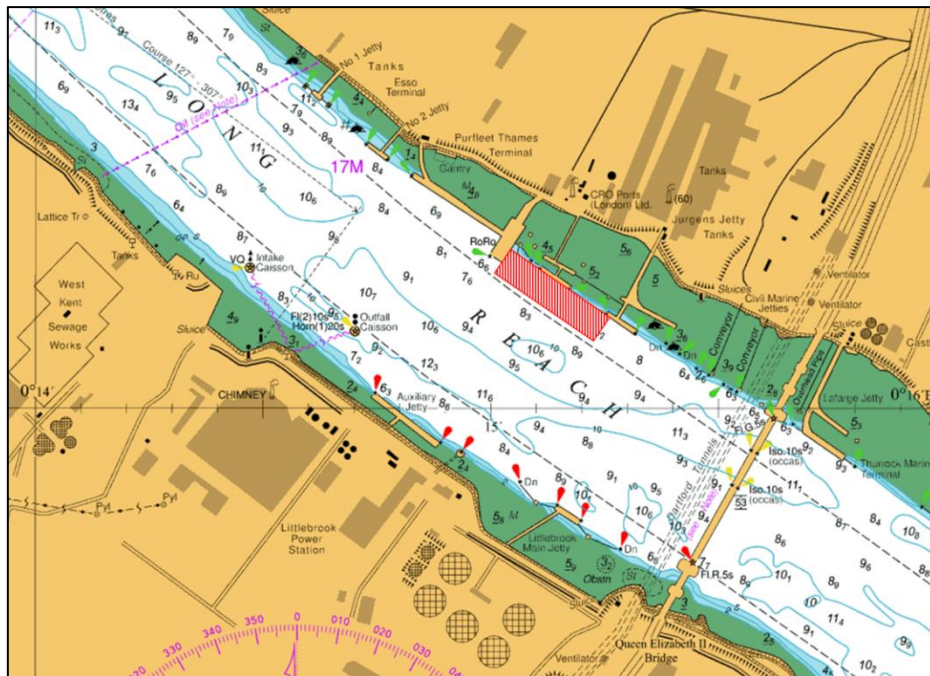


NOTICE TO MARINERS L2 of 2018

LONG REACH PURFLEET DEEP WATER LOWER BERTH REPLACEMENT WORKS

Mariners are advised that work will start on the replacement of the downstream berth at Purfleet Deep Water Lower on or around the week commencing 15th January 2018.



The work will include demolition of old jetties on the present downstream berth and the installation of new mooring piles with associated structures in place of the demolished jetty.

Works will be carried out from the Jack-Up Barge 'Skylift-23' with the tug 'PM 1' and 'Sil-Jeske-B' in attendance. An additional barge will be used at times during the works. A safety boat, 'TASKA 1204' will be in attendance throughout the works.

All vessels will maintain a continuous listening watch on VHF Channel 68. At times 'RY' will be exhibited in conjunction with a "Proceed with Caution" being included on the London VTS Routine Broadcast.

For the latest information contact London VTS on VHF Channel 68 or by telephone on 01474 560311.

12 January 2018

Port of London Authority
London River House, Royal Pier Road,
Gravesend, Kent DA12 2BG

BOB BAKER
CHIEF HARBOUR MASTER



TO RECEIVE FUTURE NOTICES TO MARINERS BY **E-MAIL**,
PLEASE REGISTER VIA OUR WEBSITE www.pla.co.uk
Telephone calls, VHF radio traffic, CCTV and radar traffic images may
be recorded in the VTS Centres at Gravesend and Woolwich



PORT OF LONDON
AUTHORITY