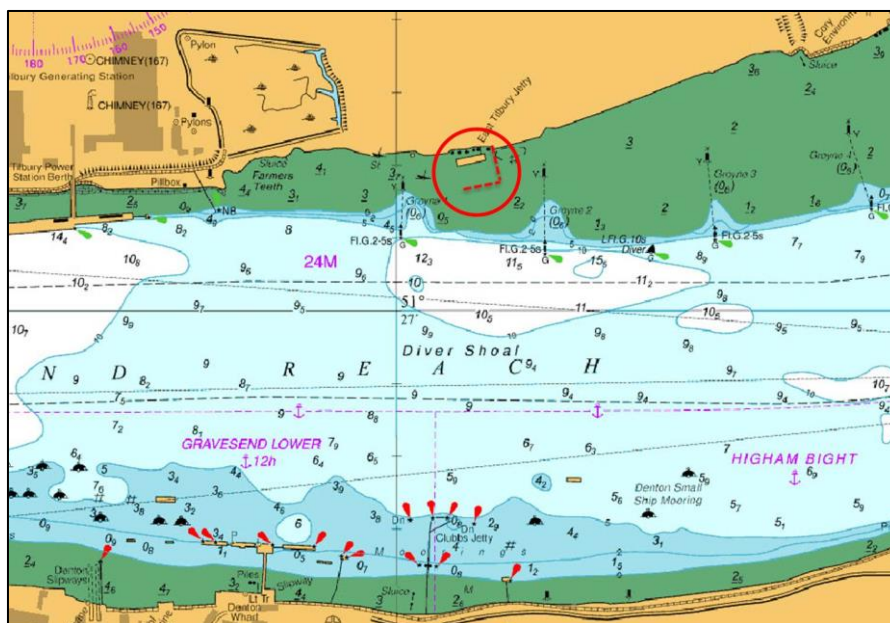


## NOTICE TO MARINERS L18 of 2017

### GRAVESEND REACH EAST TILBURY TEMPORARY JETTY

Mariners are advised that the installation of a new temporary jetty at Goshems Farm (East Tilbury) has commenced.



Construction will be undertaken using the crane barge, TTT 7120, which will be supported by the site craft provided by either GPS Marine or CPBS Marine Services. A 4m hovercraft, call sign "Coastal-pro" will also be utilised at certain times. All vessels will remain within the groynes and clear of the navigational channel during all states of the tide.

A hovercraft will be used to transfer personnel from the shore to the crane barge at low tide to allow work to continue throughout all states of the tide.

Materials will be brought in to the site via supply vessel from Northfleet and all vessels involved in the works will maintain a listening watch on VHF Ch 68.

The works are expected to continue for approximately 12 weeks and this notice will expire on their completion.

For the latest information contact London VTS on VHF Ch 68 or by telephone on 01474 560311.

**14 August 2017**

Port of London Authority  
London River House, Royal Pier Road,  
Gravesend, Kent DA12 2BG

**BOB BAKER**  
CHIEF HARBOUR MASTER



EXPIRY DATE: 30<sup>th</sup> November 2017  
TO RECEIVE FUTURE NOTICES TO MARINERS BY **E-MAIL**,  
PLEASE REGISTER VIA OUR WEBSITE [www.pla.co.uk](http://www.pla.co.uk)  
**Telephone calls, VHF radio traffic, CCTV and radar traffic images may  
be recorded in the VTS Centres at Gravesend and Woolwich**

